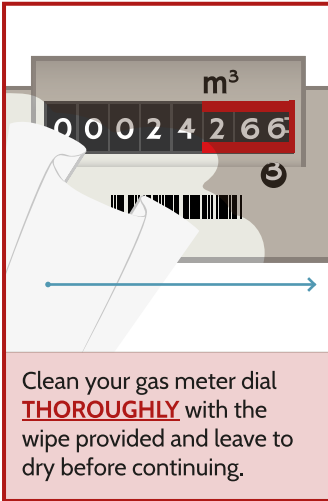
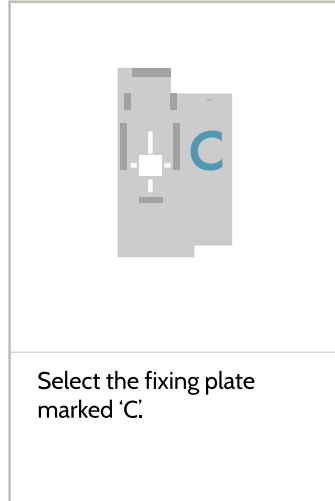




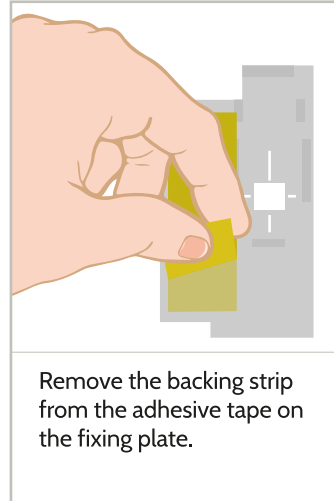
# Fitting instructions for: Sensus, UGI, Invensys Metric Meters



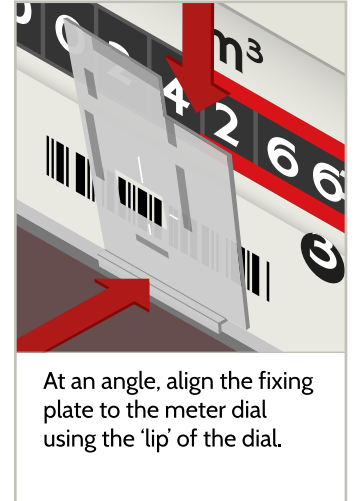
Clean your gas meter dial **THOROUGHLY** with the wipe provided and leave to dry before continuing.



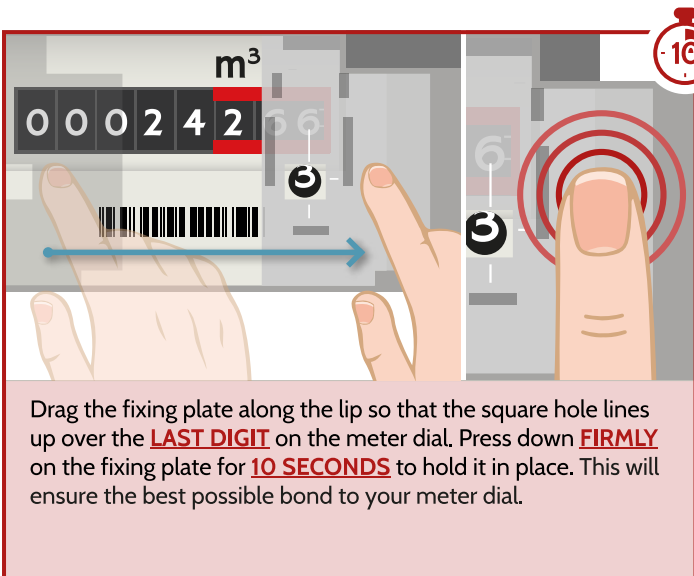
Select the fixing plate marked 'C'.



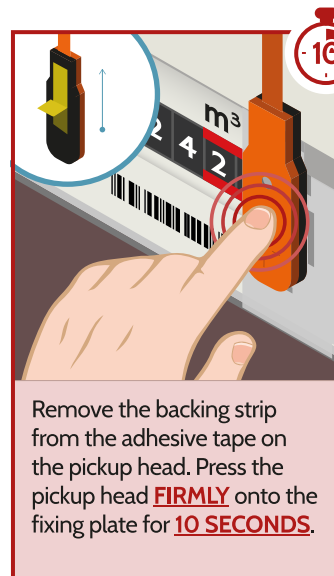
Remove the backing strip from the adhesive tape on the fixing plate.



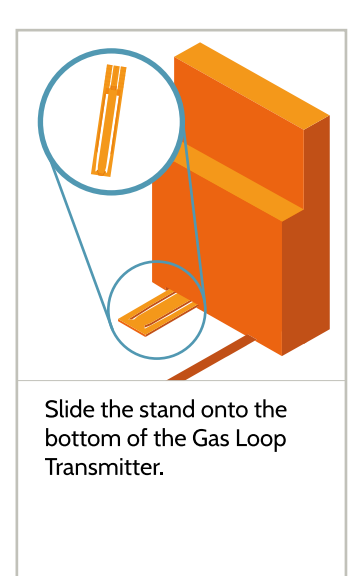
At an angle, align the fixing plate to the meter dial using the 'lip' of the dial.



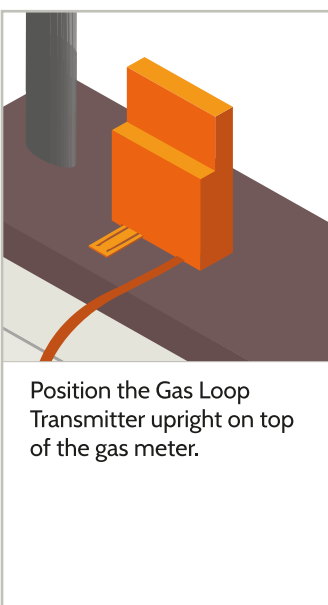
Drag the fixing plate along the lip so that the square hole lines up over the **LAST DIGIT** on the meter dial. Press down **FIRMLY** on the fixing plate for **10 SECONDS** to hold it in place. This will ensure the best possible bond to your meter dial.



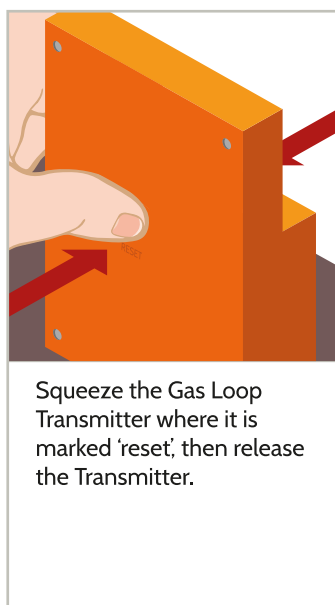
Remove the backing strip from the adhesive tape on the pickup head. Press the pickup head **FIRMLY** onto the fixing plate for **10 SECONDS**.



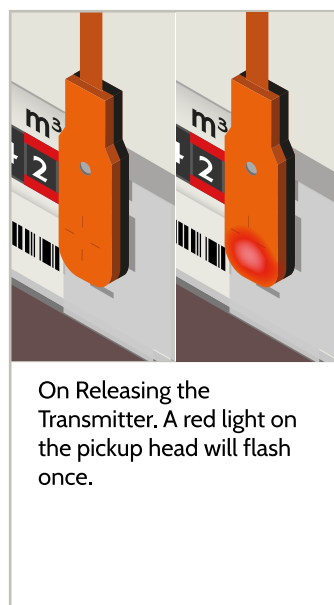
Slide the stand onto the bottom of the Gas Loop Transmitter.



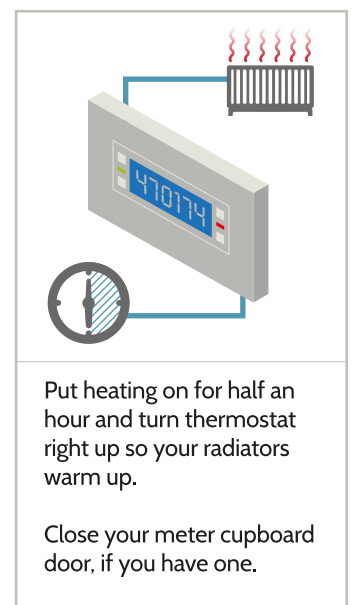
Position the Gas Loop Transmitter upright on top of the gas meter.



Squeeze the Gas Loop Transmitter where it is marked 'reset', then release the Transmitter.



On Releasing the Transmitter. A red light on the pickup head will flash once.



Put heating on for half an hour and turn thermostat right up so your radiators warm up.

Close your meter cupboard door, if you have one.