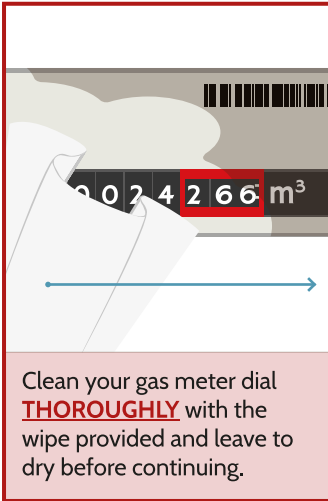
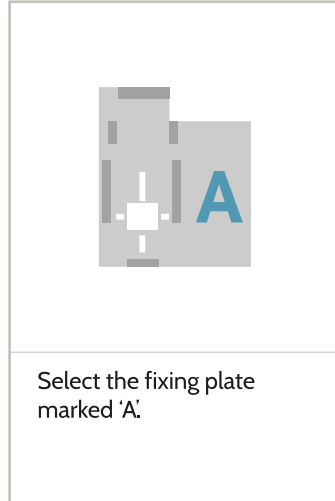




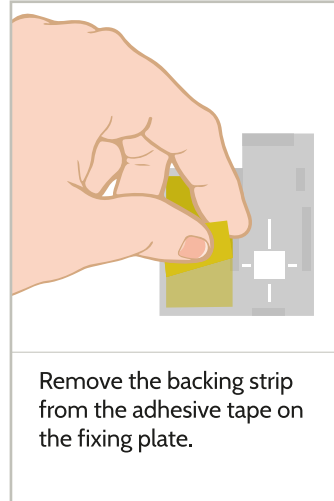
# Fitting instructions for: Metrix, Elster, Krom Schroder, Elster Jeavons, George Wilson Metric Meters



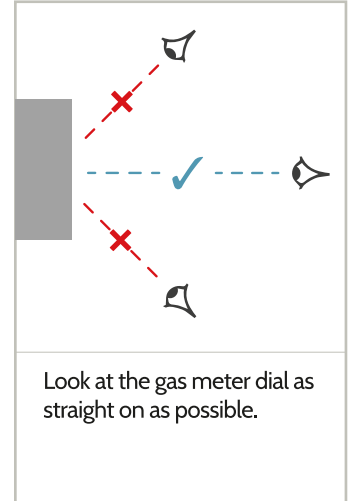
Clean your gas meter dial **THOROUGHLY** with the wipe provided and leave to dry before continuing.



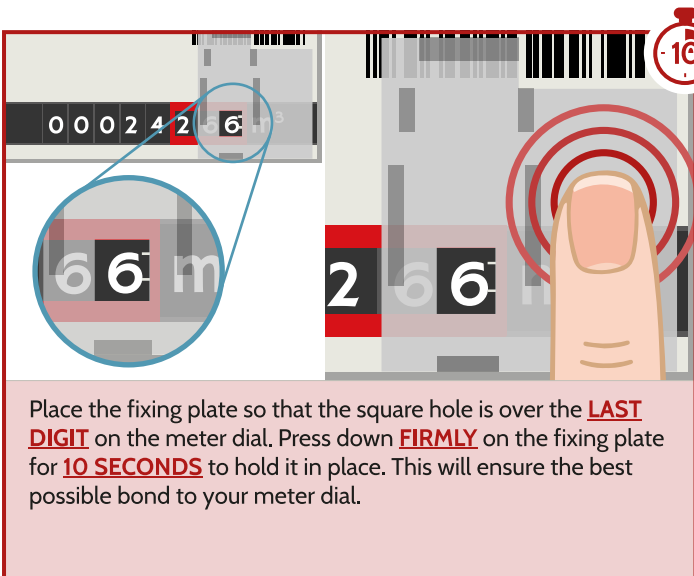
Select the fixing plate marked 'A'.



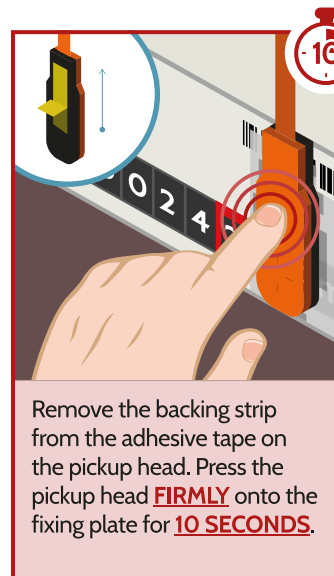
Remove the backing strip from the adhesive tape on the fixing plate.



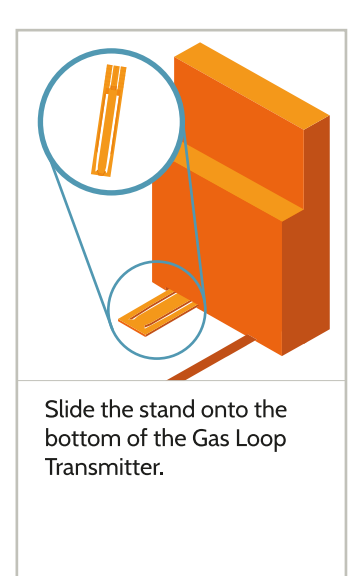
Look at the gas meter dial as straight on as possible.



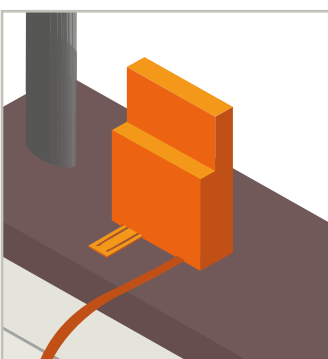
Place the fixing plate so that the square hole is over the **LAST DIGIT** on the meter dial. Press down **FIRMLY** on the fixing plate for **10 SECONDS** to hold it in place. This will ensure the best possible bond to your meter dial.



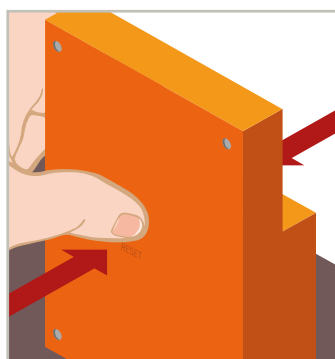
Remove the backing strip from the adhesive tape on the pickup head. Press the pickup head **FIRMLY** onto the fixing plate for **10 SECONDS**.



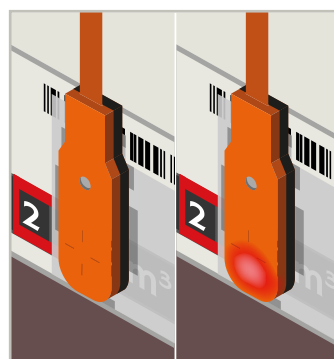
Slide the stand onto the bottom of the Gas Loop Transmitter.



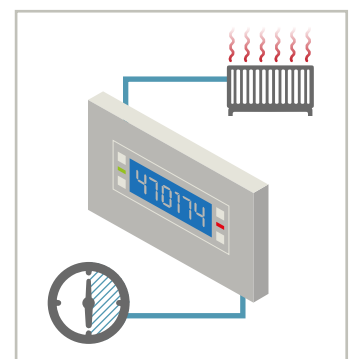
Position the Gas Loop Transmitter upright on top of the gas meter.



Squeeze the Gas Loop Transmitter where it is marked 'reset', then release the Transmitter.



On Releasing the Transmitter. A red light on the pickup head will flash once.



Put heating on for half an hour and turn thermostat right up so your radiators warm up.

Close your meter cupboard door, if you have one.